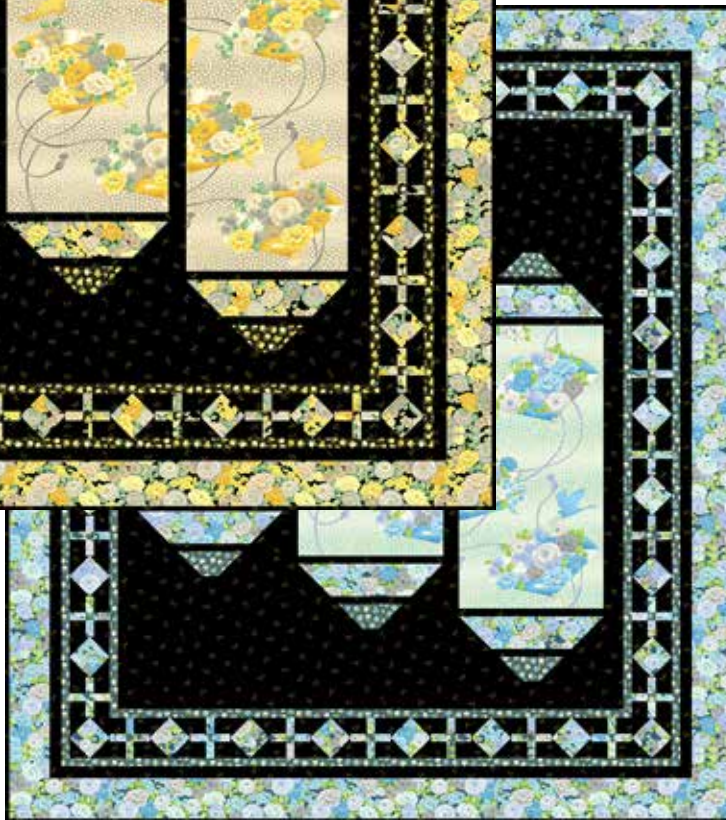
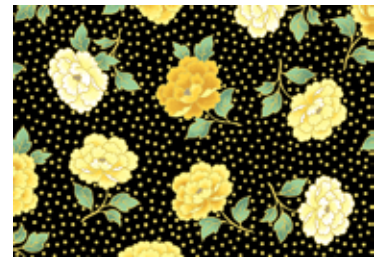
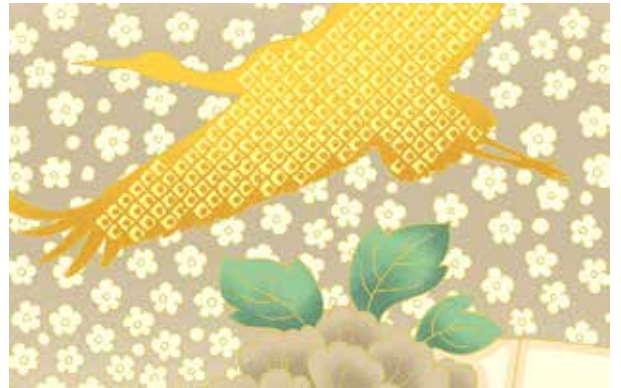


Mandalay Breeze

BY KATHY HALL



Hanging Lanterns
Quilt designed by:
Tiffany Hayes

Quilt Size: 90" x 100"

andoverfabrics.com

andover

makower uk
The Henley Studio

Free Pattern Download Available

1384 Broadway New York, NY 10018
Tel. (800) 223-5678 • andoverfabrics.com

Hanging Lanterns Quilt



Introducing Andover Fabrics new collection: **MANDALAY BREEZE** by Kathy Hall
Hanging Lanterns Quilt designed by Tiffany Hayes

Quilt finishes 90" x 100"
30 Block Y: 5" x 5"
30 Block Z: 5" x 5"

Exotic florals with an Oriental flair are the focus of this unusual queen-size quilt. The simple pieced border effectively frames the dramatic central panels, with space in the background to show off your quilting skills.

Fabric Requirements

		Yardage	Yellow	Blue	Red
Fabric A	panels	1 $\frac{3}{4}$ yards	8234-MN	8234-MB	8234-MR
Fabric B	border, blocks	3 yards	8235-MNK	8235-MB	8235-MR
Fabric C	border, blocks	1 $\frac{1}{4}$ yards	8236-MNK	8236-MB	8236-MR
*Fabric D	background	5 $\frac{1}{2}$ yards	8237-MNK	8237-MB	8237-MR
Backing		8 $\frac{1}{2}$ yards	8236-MNK	8236-MB	8236-MR
	*includes binding				

Cutting Directions

Note: Borders are listed in the order they are sewn to the quilt. Read assembly directions before cutting patches. All measurements are cut sizes and include $\frac{1}{4}$ " seam allowances. Borders are cut the exact lengths required plus $\frac{1}{4}$ " seam allowances. WOF designates the width of fabric from selvedge to selvedge (approximately 42" wide).

Fabric A

Cut (3) rectangles 18 $\frac{1}{2}$ " x 35 $\frac{1}{2}$ ", cut crosswise

Fabric B

Cut (4) borders 5 $\frac{1}{2}$ " x 90 $\frac{1}{2}$ ", cut lengthwise

(Read Step 1 before cutting)

Cut (6) strips 4 $\frac{1}{2}$ " x 18 $\frac{1}{2}$ " (large fast-45 unit)

Cut (30) squares 5 $\frac{1}{2}$ " x 5 $\frac{1}{2}$ " (block Y)

Cut (120) rectangles 1 $\frac{1}{2}$ " x 2 $\frac{1}{2}$ " (block Z)

Fabric C

Cut (15) strips 1 $\frac{1}{2}$ " x WOF, pieced to make the following:

(2) side borders 1 $\frac{1}{2}$ " x 73 $\frac{1}{2}$ "

(2) top/bottom borders 1 $\frac{1}{2}$ " x 65 $\frac{1}{2}$ "

(2) side borders 1 $\frac{1}{2}$ " x 85 $\frac{1}{2}$ "

(2) top/bottom borders 1 $\frac{1}{2}$ " x 77 $\frac{1}{2}$ "

Cut (6) rectangles 3 $\frac{1}{2}$ " x 8 $\frac{1}{2}$ " (small fast-45 unit)

Cut (30) squares 1 $\frac{1}{2}$ " x 1 $\frac{1}{2}$ " (block Z)

Fabric D

Cut (5) strips 2 $\frac{1}{2}$ " x 80" for binding, cut lengthwise

Cut (2) side borders 2" x 70 $\frac{1}{2}$ ", cut lengthwise

Cut (2) t/b borders 2" x 63 $\frac{1}{2}$ "

Cut (2) side borders 2" x 87 $\frac{1}{2}$ "

Cut (2) t/b borders 2" x 80 $\frac{1}{2}$ "

Cut (2) rectangles 15 $\frac{1}{2}$ " x 20 $\frac{1}{2}$ " (background)

Cut (2) rectangles 9" x 20 $\frac{1}{2}$ " (background)

Cut (2) strips 2 $\frac{1}{2}$ " x 20 $\frac{1}{2}$ " (background)

Cut (6) sashes 1 $\frac{1}{2}$ " x 35 $\frac{1}{2}$ "

Cut (12) strips 1 $\frac{1}{2}$ " x 20 $\frac{1}{2}$ " (panel unit)

Cut (12) rectangles 3 $\frac{1}{2}$ " x 6 $\frac{1}{2}$ " (panel unit)

Cut (12) squares 4 $\frac{1}{2}$ " x 4 $\frac{1}{2}$ " (large fast-45 unit)

Cut (12) squares 3 $\frac{1}{2}$ " x 3 $\frac{1}{2}$ " (small fast-45 unit)

Cut (120) squares 3" x 3" (block Y)

Cut (120) squares 2 $\frac{1}{2}$ " x 2 $\frac{1}{2}$ " (block Z)

Cut (12) rectangles 1 $\frac{1}{2}$ " x 4 $\frac{1}{2}$ " (panel unit)

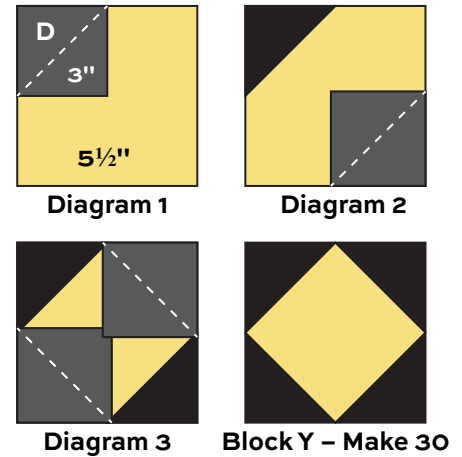
Backing

Cut (3) panels 36" x 98", pieced to fit quilt top with overlap on all sides

Hanging Lanterns Quilt

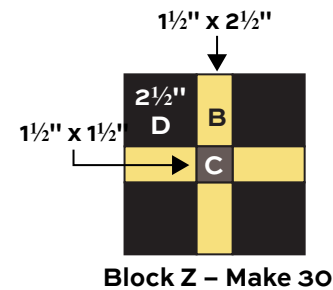
Making the Quilt

1. For insurance, you may wish to cut each border strip 1"-2" longer than listed. See Step 6. The blocks are made with fast-45 methods. Draw a diagonal line on the wrong side of each Fabric D 3" square. Referring to Diagram 1, place a marked square on a Fabric B 5½" square, right sides together, aligning raw edges at the corner. Stitch on the drawn line; trim away and discard excess fabric. Press open. Repeat on the opposite corner, watching orientation of the sewing (Diagram 2). Repeat on the remaining corners (Diagram 3). Make 30 Block Y.

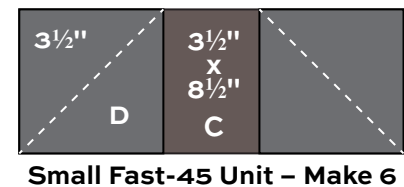


2. Referring to the Block Z diagram, join B, C, and D patches to make a block. Make 30 Block Z. Set aside.

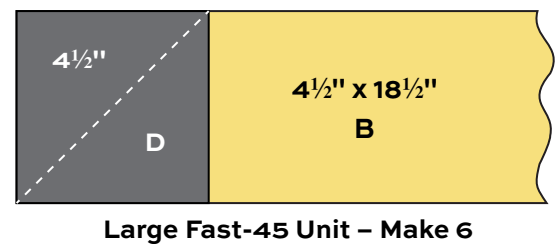
3. Referring to the Small Fast-45 Unit, draw a diagonal line on the wrong side of each Fabric D 3½" square, using a white pencil to draw the line. Place a marked square on a Fabric C rectangle, right sides together, aligning raw edges at the corner. Stitch on the drawn line; trim away and discard excess fabric. Press open. Repeat on the opposite end, watching orientation of the sewing line. Make 6 small units. Likewise, sew Fabric D 4½" squares on each end of Fabric B 4½" x 18½" rectangles. Make 30 large units.



4. Referring to the Panel Unit diagram, sew Fabric D 3½" x 6½" rectangles to ends of a small fast-45 unit. Join a Fabric D 1½" x 20½" strip to the bottom edge. Sew Fabric D 1½" x 4½" strips to ends of a large fast-45 unit. Sew this to the bottom. Finally, join a 1½" x 20½" strip to the bottom. Make 6 Panel Units like this.



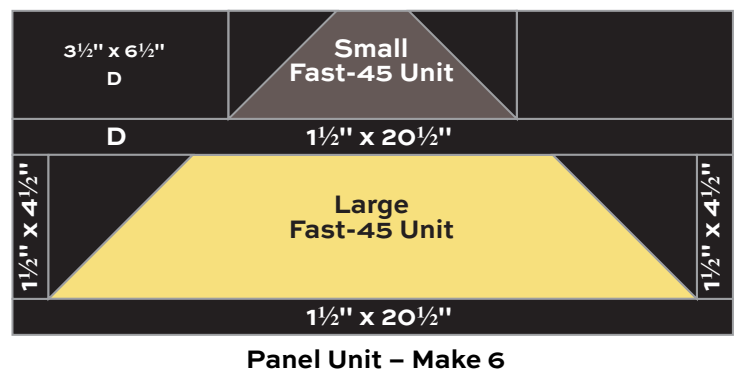
5. Refer to the Quilt Diagram for the following steps. Sew Fabric D 1½" x 35½" strips to sides of each Fabric A rectangle. Sew a small fast-45 unit to the top and bottom of each A, turning units as shown. Finally, sew the appropriate Fabric D patch to the top and bottom of each to make 3 panels. Join the panels in the order shown to make the quilt center.



6. If you cut border strips longer than listed, measure the center of the quilt vertically, and trim the side borders to that length. Press the borders away from the quilt. Measure the quilt center horizontally, including the added borders, and cut the top/bottom borders that length. Sew borders to the quilt in this order: Fabric D 70½" side borders, Fabric D 63½" top/bottom borders, Fabric C 73½" side borders, Fabric C 65½" t/b borders.

7. Join 8 Block Z and 7 Block Y to make a side pieced border. Make 2 borders and sew to the sides. Join 8 Block Y and 7 Block Z to make a top border. Sew to the top. Repeat for the bottom.

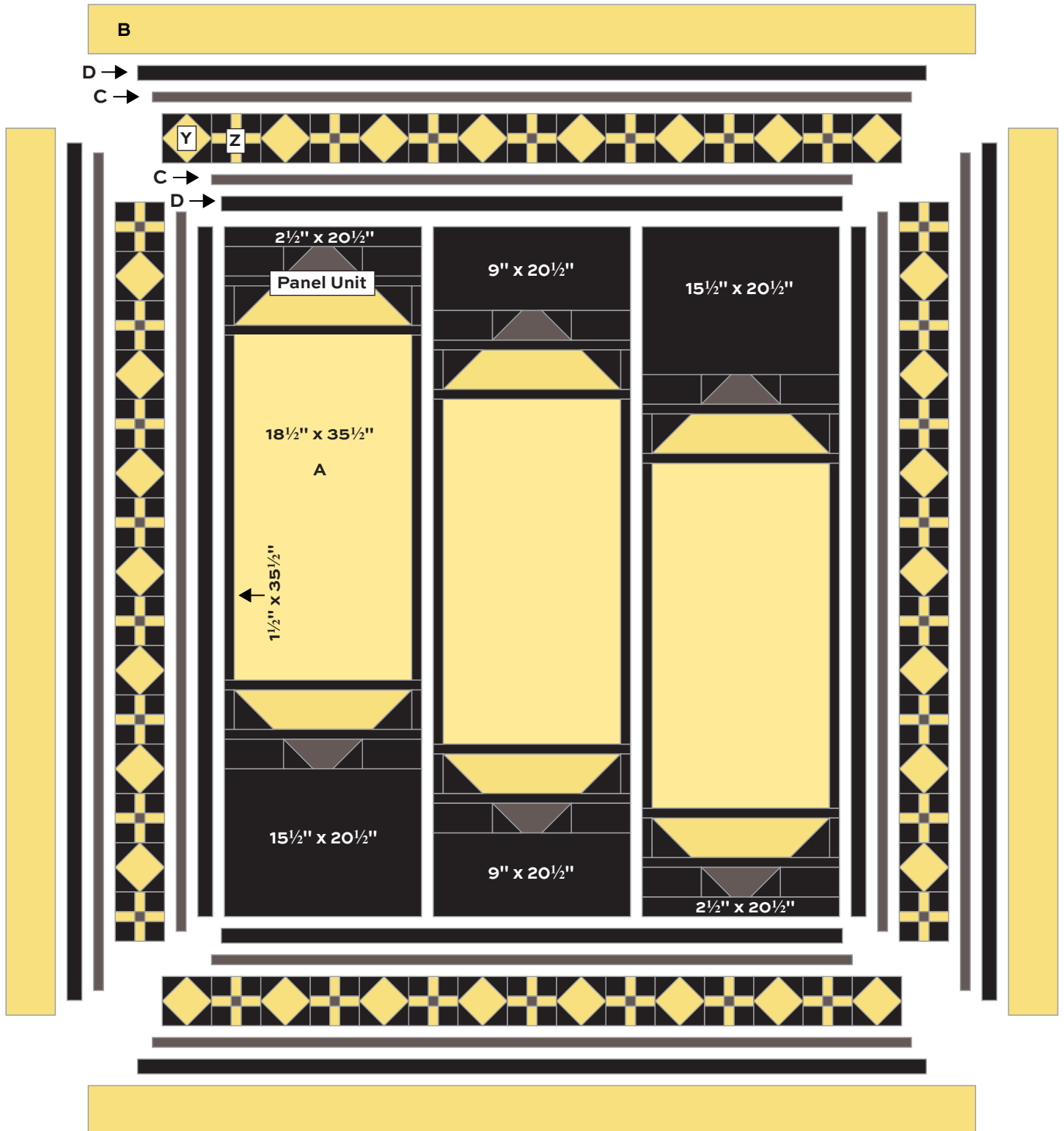
8. Sew remaining Fabric C, D, and B borders to the quilt, sides on first.



Hanging Lanterns Quilt

Finishing the Quilt

9. Layer the quilt with batting and backing and baste. Quilt in the ditch around borders and block patches. Quilt around the printed motifs in the A patches and outer border. Quilt the black background as you wish. Bind to finish the quilt.



Quilt Diagram

Mandalay Breeze

BY KATHY HALL



8234-MN*



8234-MB



8234-MR



8235-MNK*



8235-MB



8235-MR



8236-MNK*



8236-MB



8236-MR



8237-MNK*



8237-MB



8237-MR

*Indicates fabrics used in quilt pattern. Fabrics shown are 15% of actual size.

andover



makower uk
The Henley Studio

Free Pattern Download Available

1384 Broadway New York, NY 10018
Tel. (800) 223-5678 • andoverfabrics.com